



www.yorkshire-energy-park.co.uk

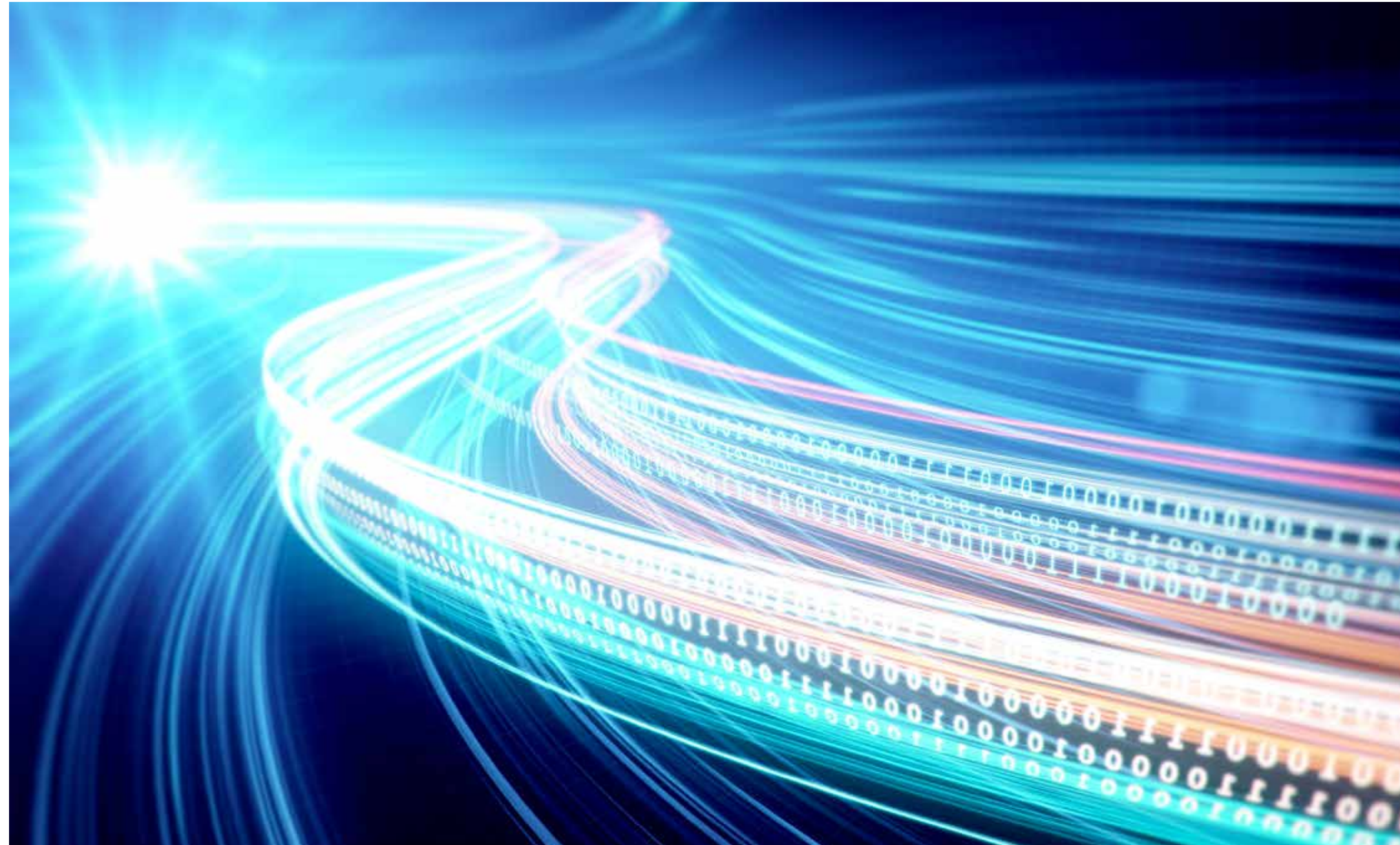


POWERED BY INNOVATION.

A flagship development situated strategically in the UK's Energy Estuary, the Yorkshire Energy Park offers a unique mix of innovative space for organisations operating in key strategic sectors – from energy to communication.

Generating low cost, low carbon, renewable energy, whilst offering high speed data communications and digital security; energy and technological innovation is at the heart of the Yorkshire Energy Park.

Offering excellent links to research and development, an exceptional transport infrastructure and access to a highly skilled workforce – be part of this pioneering new development.





£8 BILLION+
OF PRIVATE SECTOR
INVESTMENT BETWEEN
2013 - 2019



£500 MILLION
INVESTED
IN HIGHWAYS
SCHEMES



THE FASTEST
DEVELOPING REGION FOR
JOB GROWTH AT TWICE
THE NATIONAL AVERAGE.

INVESTING IN INNOVATION.

Available from 2019, the Yorkshire Energy Park represents the vision of a consortium of local, national and international companies who have come together, bringing their expertise and commitment to the Yorkshire economy.

On completion, the Yorkshire Energy Park will provide a unique location for new and relocating businesses to thrive and grow, at the heart of the UK's energy estuary.



The Yorkshire Energy Park would further strengthen our position as the UK's Energy Estuary, building on the success of the recent Siemens investment. We see this development as forming an important component of the wider portfolio of investment opportunities across the sub-region.

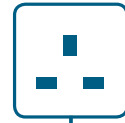
Lord Haskins, Chair, Humber Local Enterprise Partnership



DRIVING INNOVATION ACROSS THE DIGITAL, RENEWABLE ENERGY AND EDUCATION SECTORS.

This beautifully landscaped, high quality park offers a unique mix of innovative space for organisations operating in key strategic sectors, from energy to communication.

The site will include both on and off-site energy generation along with a primary sub-station that provides private wire electricity to the wider park.



A UNIQUE POSITION LOCATED CLOSE TO **THE NATIONAL GRID** ACCESS POINT



DETAILED SITE PLAN.

-  Sports centre & pitches
-  Business park
-  Education, training & research campus
-  On-site energy infrastructure
-  Off-site energy infrastructure
-  Primary sub station
-  Data Centre

Features include:

-  Over 620,000sqft of incubator space and business units, alongside bespoke design and build
-  270,000sqft of storage and distribution accommodation
-  A data centre providing resilient data storage solutions, including up to 600 racks
-  Associated on-site accommodation
-  An education, training and research campus, featuring 60,000sqft of learning space
-  Sporting facilities and community venue

THE HEART OF THE UK'S ENERGY ESTUARY.

The Yorkshire Energy Park will be located on a former aerodrome site in the East Riding of Yorkshire, on the outskirts of Hull - UK City of Culture 2017.

A growing number of national and international corporations are choosing the Humber Estuary as their base. These include the providers of offshore wind-farm equipment and energy storage technology; energy intensive processors and manufacturers; and digital storage and information technology companies.

The area is benefiting from a renewable energy and digital technology renaissance, making it the ideal place to invest in.



TRANSPORT CONNECTIONS.

HUMBERSIDE AIRPORT

51 minutes Hull > Humberside Airport

LEEDS

57 minutes Hull Interchange > Leeds Station

1 hour 35 mins Hull > Leeds city centre

MANCHESTER

2 hours 20 mins Hull Interchange > Manchester Piccadilly

2 hours 26 mins Hull > Manchester city centre

ABOUT THE TEAM BEHIND YORKSHIRE ENERGY PARK.

A consortium of companies with expertise and commitment to the Yorkshire economy came together to create Yorkshire Energy Park.



Sewell invests time, experience and money to unlock opportunities which contribute to the development of the Yorkshire region. Part of the 140-year-old Sewell Group.



Eco Parks Developments Ltd is a subsidiary business of Hesse-based MS3 Networks. MS3 Networks is the communication partner of the Yorkshire Energy Park providing ultrafast fibre-to-the-premise (FTTP) connectivity utilising MS3's existing fibre infrastructure.

CHILTERN GROUP

New Technology Developments Limited (NTD) is Chiltern's SPV investment vehicle in the Yorkshire Energy Park. Chiltern Group acts as a regeneration, renewable energy and technology commercial deal maker. Chiltern is a major shareholder in the JV with Dawn Developments and Glasgow City Council currently developing the highly successful £300 million College Lands, Glasgow regeneration project. Chiltern also provides strategic commercial advice to a number of blue chip organisations in the above sectors.





SYNERGY WITH LEADING INDUSTRY INNOVATORS.

Bringing together leading companies in innovation from across the globe, organisations already engaging with the Yorkshire Energy Park developers include:



Join global industry leaders in energy generation and technology to deliver UK firsts, alongside local and regional partners.



POWERING THE LOCAL ECONOMY AND COMMUNITY.

The impact of this important new facility goes well beyond renewable energy and digital technology innovation. The development will generate significant employment and education opportunities for local people, as well as attracting new investment into the area.

The development includes state-of-the-art sporting facilities to benefit the local community, including football and rugby pitches, a club house, gym, changing facilities and a venue for private and corporate events.



Eastside Community Sports Trust would have a sustainable offer for future generations.



80%
LOCAL LABOUR
AMBITION DURING
CONSTRUCTION



The energy sector is a hugely significant driver across the country. Hull College see this as a key growth area within the higher and further education sectors.





For occupier enquires:

David Garness, Managing Director, Garness Jones:

01482 312360 | david.garness@garnessjones.co.uk

Andrew Gent, Director, GentVisick:

07793 551 634 | andrew.gent@gentvisick.com

For Investment enquires:

Roger Lown, Senior Director, GVA:

07973 601337 | roger.lown@gva.co.uk

BE A PART OF THIS INTERNATIONAL FLAGSHIP DEVELOPMENT.

www.yorkshire-energy-park.co.uk

GVA 65 Gresham Street, London EC2V 7NQ

GVA is the trading name of GVA Grimley Limited an Apleona company.
©2017 GVA

Important notice

GVA and Garness Jones hereby give notice that the information provided (either for itself, for any joint agents or for the vendors/lessors of this property whose agent GVA is) in this brochure is provided on the following conditions:

(1) The particulars are set out as a general outline only, for the guidance of intending purchasers and/or lessees and do not constitute an offer or contract, or part of an offer or contract.

(2) All descriptions, dimensions and references to this property's condition and any necessary permission for use and occupation, and any other relevant details, are given in good faith and are believed to be correct. However, any intending purchasers or tenants should not rely on them as statements or representations of fact but satisfy themselves of their correctness by inspection or otherwise.

(3) No person in the employment of GVA, Garness Jones, or any joint agents, has any authority to make or give any representation or warranty whatsoever in relation to the property or properties in this brochure.

(4) GVA and Garness Jones shall have no liability whatsoever in relation to any documents contained within the brochure or any elements of the brochure which were prepared solely by third parties, and not by GVA and Garness Jones.